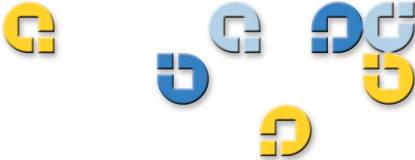


Quantum.



SNMP Reference Guide SNMP Reference Guide SNMP Reference Guide

Quantum DXi-Series

DXi-Series

Quantum DXi-Series SNMP Reference Guide, 6-66589-02 Rev B, March 2010, Product of USA.

Quantum Corporation provides this publication “as is” without warranty of any kind, either express or implied, including but not limited to the implied warranties of merchantability or fitness for a particular purpose. Quantum Corporation may revise this publication from time to time without notice.

COPYRIGHT STATEMENT

Copyright 2010 by Quantum Corporation. All rights reserved.

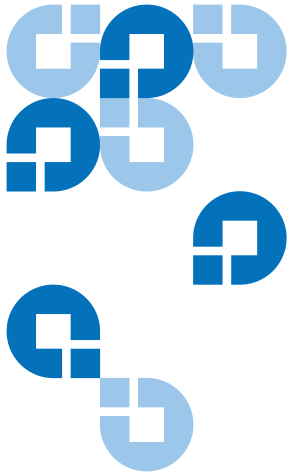
Your right to copy this manual is limited by copyright law. Making copies or adaptations without prior written authorization of Quantum Corporation is prohibited by law and constitutes a punishable violation of the law.

TRADEMARK STATEMENT

DLT and DLTtape are trademarks of Quantum Corporation.

Quantum, the Quantum logo, and the DLTtape logo are all registered trademarks of Quantum Corporation.

Other trademarks may be mentioned herein which belong to other companies.



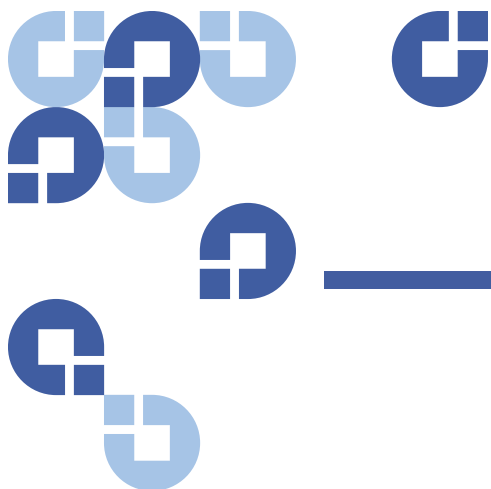
Contents

Preface	vii
----------------	------------

Chapter 1	Description	1
	SNMP Functionality Available to Remote Applications.	1
	Accessing SNMP Information.	2
	SNMPv3	2
	SNMP Traps	3
	SNMP Queries	5
	SNMP Community Strings	5

Chapter 2	SNMP Agent	9
	Quantum SNMP MIB	9
	qSystemInfo Group	11
	qDeviceName	11
	qAssignedName	11
	qLocation	11
	qVendorId.	11
	qProdId.	11
	qProdRev.	12

qState	12
qSerialNumber	12
qTrapDestination Group	12
qTrapAddress1	12
qTrapAddress2	12
qTrapAddress3	12
qTrapAddress4	13
qTrapAddress5	13
qTrapEnable Group	13
qInfoEnable	13
qWarningEnable	13
qCriticalEnable	13
qAvailableEnable.	13
qUnavailableEnable.	14
qNoInterventionNeededEnable.	14
qRequestedInterventionEnable	14
qRequiredInterventionEnable	14
qTraps Group	14
qInfoTrap	14
qWarningTrap.	15
qCriticalTrap	15
qAvailableTrap	15
qUnavailableTrap	15
qNoInterventionNeededTrap.	15
qRequestedInterventionTrap.	15
qRequiredInterventionTrap	15
Other Supported MIBs.	16



Preface

This manual introduces the Quantum DXi-Series enhanced data protection systems and discusses:

- System operations
- Configuration
- Web interface
- Basic troubleshooting

Audience

This manual is written for DXi-Series system administrators and field service engineers.

Note: It is useful for the audience to have a basic understanding of UNIX® and backup/recovery systems.

Document Organization

Following is a brief description of chapter contents.

- [Chapter , “Description,”](#) provides an overview of SNMP.
- [Chapter , “SNMP Agent,”](#) provides information on the SNMP agent.
- [Chapter , “SNMP Traps,”](#) provides information on the supported SNMP traps.

Notational Conventions

This manual uses the following conventions:

Caution: Caution indicates potential hazards to equipment or data.

WARNING: Warning indicates potential hazards to personal safety.

Note: Note emphasizes important information related to the main topic.

- Right side of the system — Refers to the right side as you face the component being described.
- Left side of the system — Refers to the left side as you face the component being described.
- *b* — All binary numbers are succeeded by “b.”
- *h* — All hexadecimal numbers are succeeded by “h.”
- Error or attention conditions are represented in parenthesis that translate as follows:

(SK=S ASC=AA ASCQ=QQ)

where:

S — hexadecimal sense key value

AA — hexadecimal additional sense code

QQ — hexadecimal additional sense code qualifiers

Related Documents

The following Quantum documents are also available for the DXi-Series systems:

Document No.	Document Title	Document Description
6-00618	System Safety and Regulatory Information - Quantum Products	Lists all safety and regulatory information for all Quantum products.

For the most up to date information on DXi-Series systems, see:

<http://www.quantum.com/ServiceandSupport/Index.aspx>

Contacts

Quantum company contacts are listed below.

Quantum Corporate Headquarters

To order documentation on the DXi-SeriesDXi-Series systems or other products contact:

Quantum Corporation (*Corporate Headquarters*)
1650 Technology Drive, Suite 700
San Jose, CA 95110-1382

Technical Publications

To comment on existing documentation send e-mail to:

doc-comments@quantum.com

Quantum Home Page

Visit the Quantum home page at:

<http://www.quantum.com>

Getting More Information or Help

StorageCare™, Quantum's comprehensive service approach, leverages advanced data access and diagnostics technologies with cross-environment, multi-vendor expertise to resolve backup issues faster and at lower cost.

Accelerate service issue resolution with these exclusive Quantum StorageCare services:

- **Service and Support Website** - Register products, license software, browse Quantum Learning courses, check backup software and operating system support, and locate manuals, FAQs, firmware downloads, product updates and more in one convenient location. Benefit today at:

<http://www.quantum.com/ServiceandSupport/Index.aspx>

Quantum.
Global Services

- **eSupport** - Submit online service requests, update contact information, add attachments, and receive status updates via email. Online Service accounts are free from Quantum. That account can also be used to access Quantum's Knowledge Base, a comprehensive repository of product support information. Sign up today at:

<http://www.quantum.com/ServiceandSupport/eSupport/Index.aspx>

- **StorageCare Guardian** - Securely links Quantum hardware and the diagnostic data from the surrounding storage ecosystem to Quantum's Global Services Team for faster, more precise root cause diagnosis. StorageCare Guardian is simple to set up through the internet and provides secure, two-way communications with Quantum's Secure Service Center. More StorageCare Guardian information can be found at:

<http://www.quantum.com/ServiceandSupport/Services/GuardianInformation/Index.aspx>

For further assistance, or if training is desired, contact Quantum Customer Support Center:

North America: +1-800-284-5101

UK, France and Germany 00800 4 QUANTUM

EMEA+44 1256 848 766

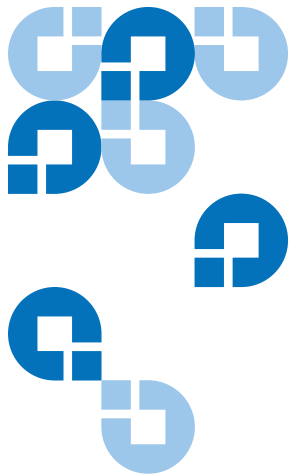
For worldwide support:

<http://www.quantum.com/ServiceandSupport/Index.aspx>

Worldwide End-User Product Warranty

For more information on the Quantum Worldwide End-User Standard Limited Product Warranty:

<http://www.quantum.com/pdf/QuantumWarranty.pdf>



Chapter 1 Description

Simple Network Management Protocol (SNMP) is a light-weight protocol designed for remote management and monitoring of infrastructure devices. DXi-Series systems provide SNMP support so you can use a framework application to monitor the status of the system. Using SNMP, you can be alerted of numerous system events.

The DXi-Series (DXi2500-D, DXi4500, DXi6500, and DXi7500) also provides detailed status reports from its own reporting system, called the Reliability, Availability, and Serviceability (Service) ticket system. Service tickets enable system administrators to diagnose specific system events.

SNMP Functionality Available to Remote Applications

The DXi-Series supports standard SNMP functionality, including GET queries and unicast traps (which can be sent only to registered recipients), that enables you to monitor system status from a remote application. SET commands are currently not enabled on the DXi-Series.

All DXi-Series MIB variables are supported by Quantum for remote management of the system.

Specific SNMP characteristics include:

- Supports SNMP v1 and v2c

- Supports SNMP v1 and v2 traps as defined by RFC 1157. You can set the system to report SNMP traps using either v1 or v2 (v1 is the default). The timeout for all SNMP requests to the system must be at 10 seconds or greater (command line parameter-t).
- SMIv2 compliance only
- Usage of port 161 for GET queries
- Default community read/trap strings: *publicCmtyStr* (see *<Teal underline>SNMP Community Strings on page 5*)
- Trap Registration interface in the system's remote web client, which enables you to configure application IP addresses, transport protocols, and user-configurable UDP port numbers to receive traps

Accessing SNMP Information

SNMP information can be obtained from the DXi-Series using traps and GET queries. Using the information contained in this guide, system administrators can configure their framework application to generate alerts to receive SNMP information.

By default, most SNMP information is returned as an integer value (system partition names, however, are returned as string values). For instance, the return value of *system Main Door* might be 2, which indicates that the system door is closed.

You can, however, configure the framework application to return status information as a string value, which provides a description of the status.

SNMPv3

The DXi-Series supports SNMP version 1 and version 2c for MIB information retrieval.

To access the system for SNMP support, use the following values as needed in the remote management application:

User name: Admin

Context name: (None. Leave this field blank.)

Authentication protocol: MD5

Privacy protocol: (None. Leave this field blank.)

Password: Your Admin password

For secure access to the system using SNMP, disable SNMPv1 and SNMPv2c access from the remote management pages.

SNMP Traps

Traps enable alerts to be sent automatically to registered hosts when specific events occur. Only one application per UDP port can listen for traps.

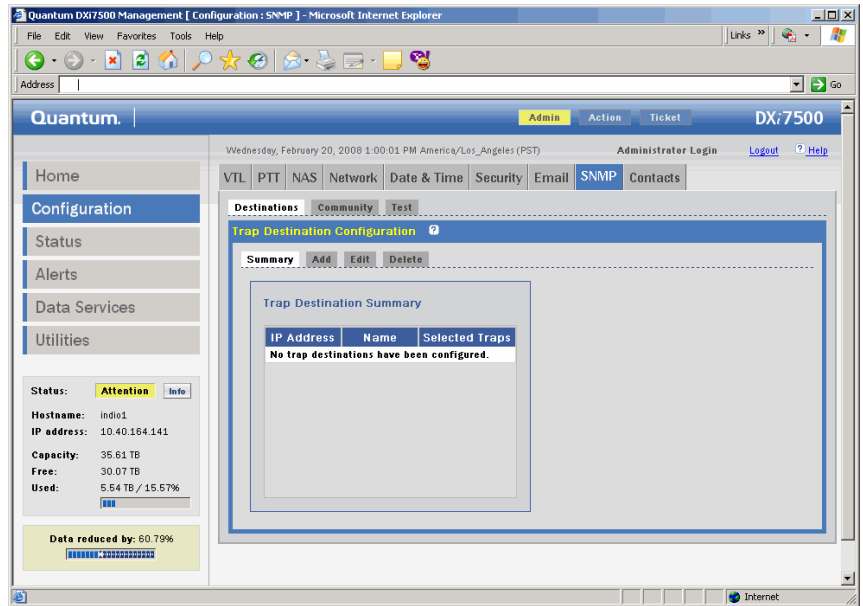
The DXi-Series supports SNMP v1 and v2 traps as defined by RFC 1157.

The timeout for all SNMP requests to the system must be at 10 seconds or greater (command line parameter-t).

To receive traps, you must perform two steps:

- 1 Configure your framework application to collect traps from the DXi-Series.
- 2 From the DXi-Series remote management screens, access the **Configuration>SNMP>Destinations** page and click **Add** to add an SNMP destination.

Figure 1 SNMP Trap Destinations (DXi7500 Remote Management Pages shown)



- 3 Enter the IP address that will receive the traps generated by the DXi-Series system, for example, 12.34.56.78.
- 4 Enter a name for the SNMP destination.
- 5 Enable the trap selections to be reported (see [table 1](#)):

Table 1 SNMP Trap Selections

Field	Description
Informational	If selected, Informational Traps are enabled.
Warning	If selected, Warning Traps are enabled.
Failure	If selected, Failure Traps are enabled.
Available	If selected, a trap is generated every time the library transitions from an unavailable to an available state.
Unavailable	If selected, a trap is generated every time the library transitions from an available to an unavailable state.

6 Click **Apply** to save the destination information.

For additional details about registering a host with the DXi-Series refer to the *DXi2500-D, DXi4500, DXi6500, or DXi7500 User's Guide*.

SNMP Queries

SNMP queries, or GET queries, can be initiated on a periodic basis by the framework application. By querying the MIB, hosts can gather status information about specific components of the system. Frequent MIB queries are not required, however, since the SNMP agent is event-driven.

Note: As with any SNMP device, excessive MIB queries can result in performance degradation for the SNMP daemon, as well as for the network.

GETs must also include an instance ID. The instance identifies a specific device from which you can retrieve status information. For example, to determine if the second partition on DXi-Series is online, access the MIB variable for logical system online status and select the instance for partition 2.

SNMP Community Strings

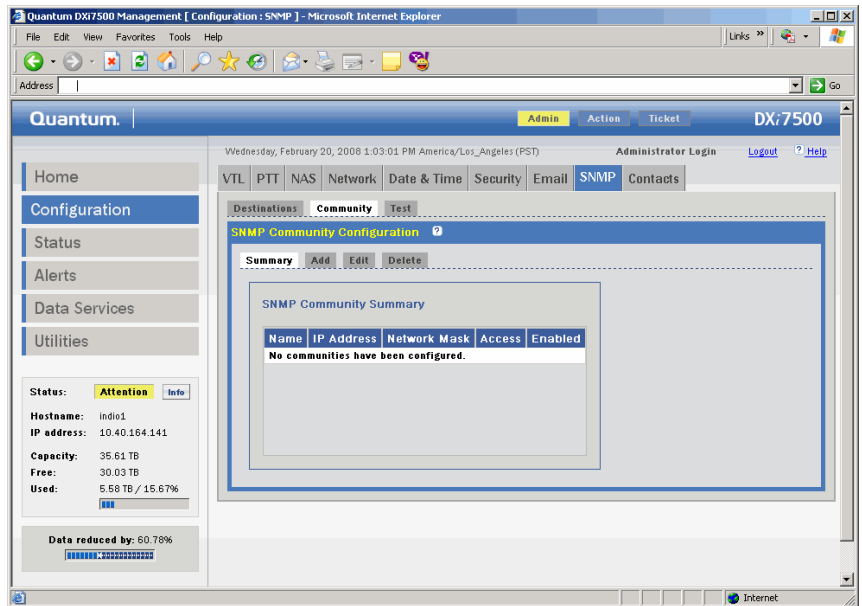
An SNMP community string is a text string that acts as a password to authenticate messages sent between the SNMP remote management application and the device (the SNMP agent). SNMP **Get** and **Get-next** requests are valid only if the community string in the request matches the community string at the device. If the community strings do not match, either modify the community string at the device so that it is the string that the management station expects, or modify the management station so that it uses the device's community strings.

The community string is included in every SNMPv1 and SNMPv2C packet transmitted between the SNMP manager and the SNMP agent. This

string is case sensitive, cannot be empty, and cannot exceed 32 characters.

- 1 From the **Configuration>SNMP>Community** page, click **Add** in the to edit the SNMP communities (see [figure 2](#)).

Figure 2 SNMP Community Management (DXi7500 Remote Management Pages shown)



- 2 Under **Add SNMP Community**, enter the new community information:
 - a A unique name in the **Name** field, the field holds up to 20 characters (a-z, A-Z), no special characters or blank spaces are allowed
 - b Enter an IP address in the **IP Address** field, if the value in the Network Mask edit box ends in a zero, the value in the IP address edit box must also end in a zero
 - c Enter a Subnet mask in the **Network Mask** field

Note: A single community with an IP address or network mask set to 0.0.0.0, or left blank, indicates that IP-address-based access control is disabled.

- d Access rights for the new community:

- **Get** allows SNMP **get** operations:
 - **Get/Set** allows both SNMP **get** and **put** operations
- 3 Select enable to enable this SNMP community.
 - 4 Click **Apply**.
 - 5 A **Information** page displays indicating the community has been added.



Chapter 2 SNMP Agent

The DXi-Series operating system is running Linux and the SNMP Agent residing within the DXi-Series system is the Net-SNMP 5.4. Whenever a request comes in to the SNMP Agent, the agent will parse the request and decide how to process. The SNMP Agent responds directly to any requests for non-Quantum specific MIB objects such as the MIB-II (defined in rfc1213) but if the request is for a Quantum specific mib object, it will pass the data to the SNMP subagent that processes all the Quantum specific mib objects. The SNMP subagent processes the request and returns the data to the Net-SNMP agent.

Quantum SNMP MIB

The SNMP agent that supports the DXi-Series system also supports the general Quantum MIB, QUANTUM-SNMP.mib. The object ID for the Quantum MIB is as follows (see [figure 3](#)):

.1(iso).3(org).6(dod).1(internet).4(private).1(enterprises).2036(atlp).2(quantum).1(quantumsnmp)

There are 5 groups under.1(quantumsnmp) tree:

qSystemInfo .1.3.6.1.4.1.2036.2.1.1)

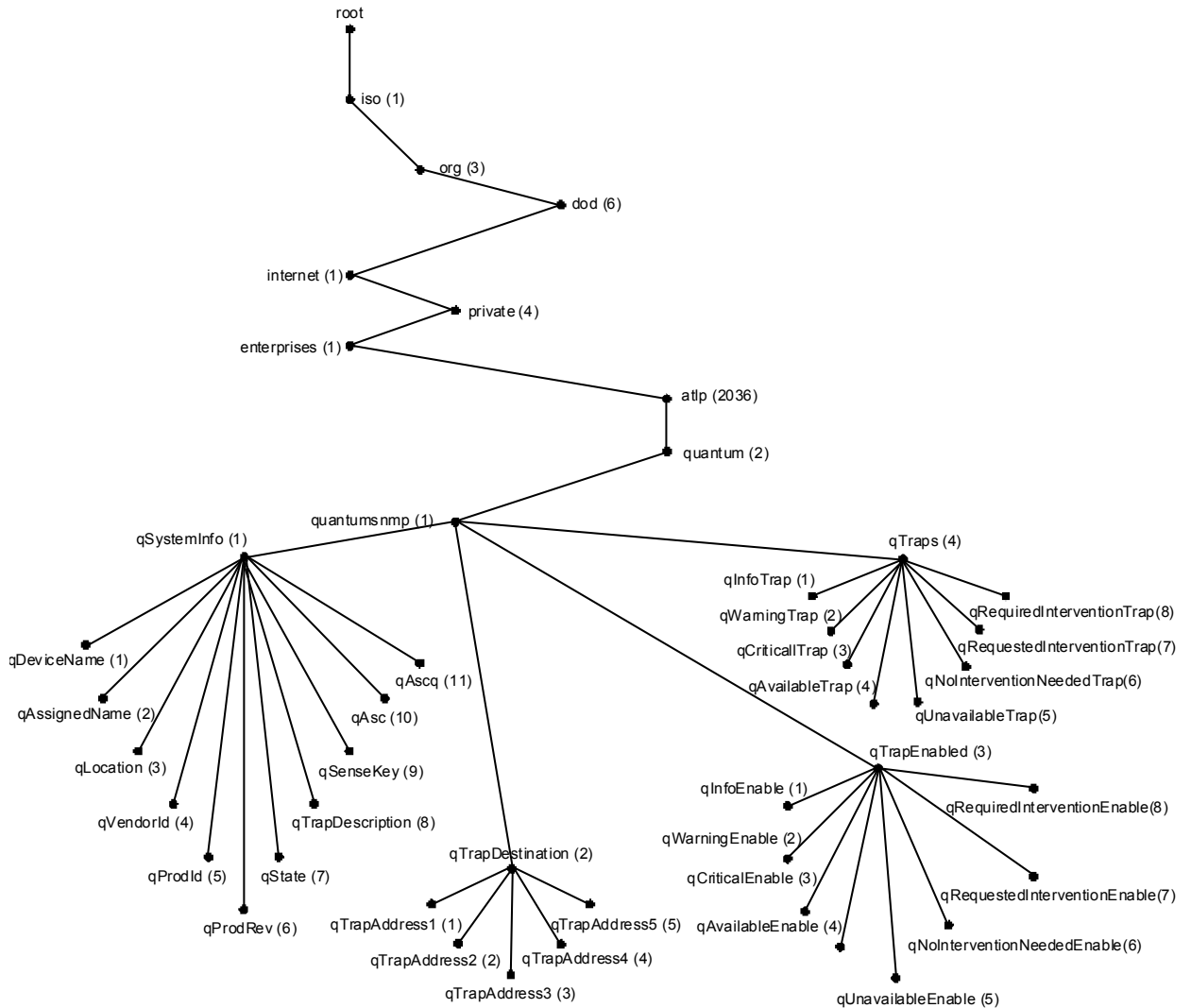
qTrapDestination.1.3.6.1.4.1.2036.2.1.2)

qTrapEnable.1.3.6.1.4.1.2036.2.1.3)

qTraps.1.3.6.1.4.1.2036.2.1.4)

qSerialNumber.ID .1.3.6.1.4.1.2036.2.1.1.12)

Figure 3 Quantum SNMP
Object ID



qSystemInfo Group

The DXi™ supports the following 8 of objects of the qSystemInfo group. Some are read-only (RO) objects; some are read-write (RW) objects; and some are "accessible-for-notify" objects. The "accessible-for-notify" objects are objects that will be sent as information when notifications or traps are sent, not readable or writable from a management console. From the management console, only the get request operation can be applied to the RO objects, and both get and set request operations can be applied to the RW objects.

qDeviceName

qDeviceName is a RO object, with the object ID .1.3.6.1.4.1.2036.2.1.1.1. This is the host name of the device.

qAssignedName

qAssignedName is a RW object, with the object ID .1.3.6.1.4.1.2036.2.1.1.2. This is the emulated storage library name. If none is given, the default value is the name of the device (qDeviceName).

qLocation

qLocation is a RW object, with the object ID .1.3.6.1.4.1.2036.2.1.1.3. This is the location of the DXi-Series. If none is provided, the value is an empty string.

qVendorId

qVendorId is a RO object, with the object ID .1.3.6.1.4.1.2036.2.1.1.4. This is the manufacturing vendor id.

qProdId

qProdId is a RO object, with the object ID .1.3.6.1.4.1.2036.2.1.1.5. This is the product model number.

qProdRev

qProdRev is a RO object, with the object ID .1.3.6.1.4.1.2036.2.1.1.6. This is the product revision number.

qState

qState is a RO object, with the object ID .1.3.6.1.4.1.2036.2.1.1.7. This is the current state of the emulated storage library.

qSerialNumber

qSerialNumber is a RO object, with the object ID .1.3.6.1.4.1.2036.2.1.1.12. This is the serial number of the Quantum device.

qTrapDestination Group

There are 5 read-write objects in the qTrapDestination group. They are the IP Addresses of the Management Consoles that are allowed to receive traps from the SNMP Agent. The maximum number of trap destination IP addresses that can be set in the agent is 5. Currently the DXi implements these as Read Only objects and the trap addresses are configurable only through the Web GUI.

qTrapAddress1

qTrapAddress1 has an object ID of .1.3.6.1.4.1.2036.2.1.2.1. This object is the IP address of the Management Console the traps will be sent to.

qTrapAddress2

qTrapAddress2 has an object ID of .1.3.6.1.4.1.2036.2.1.2.2. This object is the IP address of the Management Console the traps will be sent to.

qTrapAddress3

qTrapAddress3 has an object ID of .1.3.6.1.4.1.2036.2.1.2.3. This object is the IP address of the Management Console the traps will be sent to.

qTrapAddress4

qTrapAddress4 has an object ID of .1.3.6.1.4.1.2036.2.1.2.4. This object is the IP address of the Management Console the traps will be sent to.

qTrapAddress5

qTrapAddress5 has an object ID of .1.3.6.1.4.1.2036.2.1.2.5. This object is the IP address of the Management Console the traps will be sent to.

qTrapEnable Group

There are 8 read-write objects in the qTrapEnable group. Each object determines whether the specific type of trap should be sent to the defined management station(s) or not. If the object value is 1(disabled), the trap will not be sent. If the object value is 2(enabled), the trap will be sent.

qInfoEnable

qInfoEnable has an object ID of .1.3.6.1.4.1.2036.2.1.3.1. This object determines whether the device should send the Informational notification to the Management Console.

qWarningEnable

qWarningEnable has an object ID of .1.3.6.1.4.1.2036.2.1.3.2. This object determines whether the device should send the Warning notification to the Management Console.

qCriticalEnable

qCriticalEnable has an object ID of .1.3.6.1.4.1.2036.2.1.3.3. This object determines whether the device should send the Critical notification to the Management Console.

qAvailableEnable

qAvailableEnable has an object ID of .1.3.6.1.4.1.2036.2.1.3.4. This object determines whether the device should notify the management console when the library is available.

qUnavailableEnable

qUnavailableEnable has an object ID of .1.3.6.1.4.1.2036.2.1.3.5. This object determines whether the device should notify the management console when the library is unavailable.

qNoInterventionNeededEnable

qNoInterventionNeededEnable has an object ID of .1.3.6.1.4.1.2036.2.1.3.6. This object determines whether the device should send the "No User Intervention Needed" notification to the Management Console. This object is not used by DXi-Series.

qRequestedInterventionEnable

qRequestedInterventionEnable has an object ID of .1.3.6.1.4.1.2036.2.1.3.7. This object determines whether the device should send the "Requested User Intervention" notification to the Management Console. This object is not used by DXi-Series.

qRequiredInterventionEnable

qRequiredInterventionEnable has an object ID of .1.3.6.1.4.1.2036.2.1.3.8. This object determines whether the device should send the "Required User Intervention" notification to the Management Console. This object is not used by DXi-Series.

qTraps Group

There are 8 objects in the qTraps group, representing the 8 different types of traps. They are v2 traps with information includes: qAssignedName, qSenseKey, qAsc, qAscq, and qTrapDescription.

qInfoTrap

qInfoTrap has an object ID of .1.3.6.1.4.1.2036.2.1.4.1. The informational traps will be sent if qInfoEnable is set to enabled.

qWarningTrap

qWarningTrap has an object ID of .1.3.6.1.4.1.2036.2.1.4.2. The warning traps will be sent if qWarningEnable is set to enabled.

qCriticalTrap

qCriticalTrap has an object ID of .1.3.6.1.4.1.2036.2.1.4.3. The critical traps will be sent if qCriticalEnable is set to enabled.

qAvailableTrap

qAvailableTrap has an object ID of .1.3.6.1.4.1.2036.2.1.4.4. The available traps will be sent if qAvailableEnable is set to enabled.

qUnavailableTrap

qUnavailableTrap has an object ID of .1.3.6.1.4.1.2036.2.1.4.5. The unavailable traps will be sent if qUnavailableEnable is set to enabled.

qNoInterventionNeededTrap

qNoInterventionNeededTrap has an object ID of .1.3.6.1.4.1.2036.2.1.4.6. The "No User Intervention Needed" traps will be sent if qNoInterventionNeededEnable is set to enabled. This object is not used by DXi-Series.

qRequestedInterventionTrap

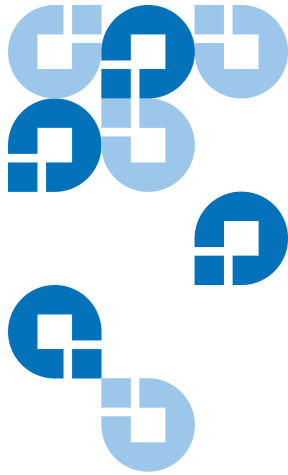
qRequestedInterventionTrap has an object ID of .1.3.6.1.4.1.2036.2.1.4.7. The "Requested User Intervention" traps will be sent if qRequestedInterventionEnable is set to enabled. This object is not used by DXi-Series.

qRequiredInterventionTrap

qRequiredInterventionTrap has an object ID of .1.3.6.1.4.1.2036.2.1.4.8. The "Required User Intervention" traps will be sent if qRequiredInterventionEnable is set to enabled. This object is not used by DXi-Series.

Other Supported MIBs

The Net-SNMP agent also supports MIBII, SNMPv2, and UCD MIBs by default.



Chapter 3

SNMP Traps

An SNMP trap is generated by an individual component in the DXi-Series device when there's a change or failure in the component and is triggered by the creation of a Service ticket.

A Service ticket event is always reported against the violating FRU. The reporting FRU can be the violating FRU itself, or a peer FRU which determines the violating FRU is in a bad state. In the current interface, it is sometimes necessary to report the violating FRU instance, as well as the parent (of the violating FRU) instance.

The following tables show the list of FRUs and the events that can generate Service tickets.

The following tables describe the system events:

- [Table 2 - Server \(Node\) Hardware Events](#)
- [Table 3 - Server \(Node\) Software Events](#)
- [Table 4 - RAID Array Events \(DXi7500 Only\)](#)
- [Table 5 - Ethernet Switch Events \(DXi7500 Only\)](#)
- [Table 6 - Network Interface Card Events](#)
- [Table 7 - Fibre Channel Switch Events \(DXi7500 Only\)](#)
- [Table 8 - Fibre Channel HBA Events](#)
- [Table 9 - Compression HBA Events \(DXi7500 Only\)](#)
- [Table 10 - Software Events](#)

Table 2 Server (Node)
Hardware Events

Sub-system	Event Description	FRU-ID/Code	Event-ID/Code	Alert (High, Middle, Low)	State (Failed, Degraded, Warning, Info, Good)
Boot Drive	Not present	SL_FRU_IOS_DRV/0102	SL_EVT_NOT_PRESENT/9	High	Failed
	IO Error	SL_FRU_IOS_DRV/0102	SL_EVT_IO_ERR/24	High	Warning
	Configuration mismatch	SL_FRU_IOS_DRV/0102	SL_EVT_CONFIGURATION_MISMATCH/77	High	Failed
	Drive Failure	SL_FRU_IOS_DRV/0102	SL_EVT_DRV_FAIL/22	High	Failed
	Drive rebuild failure	SL_FRU_IOS_DRV/0102	SL_EVT_DRV_RBLD_FAIL/46	High	Failed
BUS Communication	Communication failure (internal bus)		SL_EVT_COMM_BUS_FAIL/29	High	Failed

Sub-system	Event Description	FRU-ID/Code	Event-ID/Code	Alert (High, Middle, Low)	State (Failed, Degraded, Warning, Info, Good)
Chassis temperature	The temperature rises Non-Critical level	SL_FRU_IO_SERVER/0101	SL_EVT_OVERTEMP/36	Middle	Warning
	The temperature rises Critical level	SL_FRU_IO_SERVER/0101	SL_EVT_HIGHTEMP/34	High	Failed
	The temperature rises Non-Recoverable level	SL_FRU_IO_SERVER/0101	SL_EVT_TEMP_DEGRADE/95	High	Failed
CPU temperature	The temperature rises Non-Critical level	SL_FRU_IO_SERVER/0101	SL_EVT_OVERTEMP/36	Middle	Warning
	The temperature rises Critical level	SL_FRU_IO_SERVER/0101	SL_EVT_HIGHTEMP/34	High	Failed
	The temperature rises Non-Recoverable level	SL_FRU_IO_SERVER/0101	SL_EVT_TEMP_DEGRADE/95	High	Failed

Sub-system	Event Description	FRU-ID/Code	Event-ID/Code	Alert (High, Middle, Low)	State (Failed, Degraded, Warning, Info, Good)
Fan speed status, RPM	The speed rises Non-Critical level	SL_FRU_IOS_FAN/0107	SL_EVT_FAN_LOW_SPEED/18	High	Degraded
	The speed rises Critical level	SL_FRU_IOS_FAN/0107	SL_EVT_SPEED_CRITICAL/98	High	Failed
	The speed rises Non-Recoverable level	SL_FRU_IOS_FAN/0107	SL_EVT_SPEED_DEGRADE/99	High	Failed
	Not present	SL_FRU_IOS_FAN/0107	SL_EVT_NOT_PRESENT/9	High	Failed
Intrusion	Cover removed	SL_FRU_IO_SERVER/0101	SL_EVT_INTRUSION/100	Middle	Warning
IPMI		SL_FRU_IPMI/0806			
MB NIC	Link Down	SL_FRU_IO_SERVER/0101	SL_EVT_LINK_FAIL/14	Middle	Warning
Node	Stopped	SL_FRU_IO_SERVER/0101	SL_EVT_STOPPED/101	High	Failed
	Unavailable	SL_FRU_IO_SERVER/0101	SL_EVT_COMM_FAIL/25	Middle	Warning
	Node is down	SL_FRU_CLUSTER/0115	SL_EVT_STOPPED/101	High	Failed
PCI NIC	Not Present	SL_FRU_NIC_ETHER_PORT/0116	SL_EVT_NOT_PRESENT/9	High	Failed

Sub-system	Event Description	FRU-ID/Code	Event-ID/Code	Alert (High, Middle, Low)	State (Failed, Degraded, Warning, Info, Good)
Power supply	Failure	SL_FRU_IOS_PWR/0106	SL_EVT_PWR_FAIL/17	High	Failed
	Power supply not present	SL_FRU_IOS_PWR/0106	SL_EVT_NOT_PRESENT/9	High	Failed
Serial	Serial communication failure		SL_EVT_COMM_SERIAL_FAIL/27	High	Failed
Voltage status of 1.5v CPU Cores	The voltage rises upper Non-Critical level	SL_FRU_IO_SERVER/0101	SL_EVT_OVERVOLTAGE/10	Middle	Warning
	The voltage rises upper Critical level	SL_FRU_IO_SERVER/0101	SL_EVT_HIGHVOLTAGE/32	High	Failed
	The voltage rises upper Non-Recoverable level	SL_FRU_IO_SERVER/0101	SL_EVT_VOLTAGE_DEGRADE	High	Failed
	The voltage rises lower Non-Critical level	SL_FRU_IO_SERVER/0101	SL_EVT_UNDERVOLTAGE/11	Middle	Warning
	The voltage rises lower Critical level	SL_FRU_IO_SERVER/0101	SL_EVT_LOWVOLTAGE/31	High	Failed
	The voltage rises lower Non-Recoverable level	SL_FRU_IO_SERVER/0101	SL_EVT_VOLTAGE_DEGRADE	High	Failed

Sub-system	Event Description	FRU-ID/Code	Event-ID/Code	Alert (High, Middle, Low)	State (Failed, Degraded, Warning, Info, Good)
Voltage status of 3.3v Power Supply	The voltage rises upper Non-Critical level	SL_FRU_IO_SERVER/0101	SL_EVT_OVERVOLTAGE/10	Middle	Warning
	The voltage rises upper Critical level	SL_FRU_IO_SERVER/0101	SL_EVT_HIGHVOLTAGE/32	High	Failed
	The voltage rises upper Non-Recoverable level	SL_FRU_IO_SERVER/0101	SL_EVT_VOLTAGE_DEGRADE	High	Failed
	The voltage rises lower Non-Critical level	SL_FRU_IO_SERVER/0101	SL_EVT_UNDERVOLTAGE/11	Middle	Warning
	The voltage rises lower Critical level	SL_FRU_IO_SERVER/0101	SL_EVT_LOWVOLTAGE/31	High	Failed
	The voltage rises lower Non-Recoverable level	SL_FRU_IO_SERVER/0101	SL_EVT_VOLTAGE_DEGRADE	High	Failed

Sub-system	Event Description	FRU-ID/Code	Event-ID/Code	Alert (High, Middle, Low)	State (Failed, Degraded, Warning, Info, Good)
Voltage status of 5v Power Supply	The voltage rises upper Non-Critical level	SL_FRU_IO_SERVER/0101	SL_EVT_OVERVOLTAGE/10	Middle	Warning
	The voltage rises upper Critical level	SL_FRU_IO_SERVER/0101	SL_EVT_HIGHVOLTAGE/32	High	Failed
	The voltage rises upper Non-Recoverable level	SL_FRU_IO_SERVER/0101	SL_EVT_VOLTAGE_DEGRADE	High	Failed
	The voltage rises lower Non-Critical level	SL_FRU_IO_SERVER/0101	SL_EVT_UNDERVOLTAGE/11	Middle	Warning
	The voltage rises lower Critical level	SL_FRU_IO_SERVER/0101	SL_EVT_LOWVOLTAGE/31	High	Failed
	The voltage rises lower Non-Recoverable level	SL_FRU_IO_SERVER/0101	SL_EVT_VOLTAGE_DEGRADE	High	Failed

Sub-system	Event Description	FRU-ID/Code	Event-ID/Code	Alert (High, Middle, Low)	State (Failed, Degraded, Warning, Info, Good)
Voltage status of 12v Power Supply	The voltage rises upper Non-Critical level	SL_FRU_IO_SERVER/0101	SL_EVT_OVERVOLTAGE/10	Middle	Warning
	The voltage rises upper Critical level	SL_FRU_IO_SERVER/0101	SL_EVT_HIGHVOLTAGE/32	High	Failed
	The voltage rises upper Non-Recoverable level	SL_FRU_IO_SERVER/0101	SL_EVT_VOLTAGE_DEGRADE	High	Failed
	The voltage rises lower Non-Critical level	SL_FRU_IO_SERVER/0101	SL_EVT_UNDERVOLTAGE/11	Middle	Warning
	The voltage rises lower Critical level	SL_FRU_IO_SERVER/0101	SL_EVT_LOWVOLTAGE/31	High	Failed
	The voltage rises lower Non-Recoverable level	SL_FRU_IO_SERVER/0101	SL_EVT_VOLTAGE_DEGRADE	High	Failed

Table 3 Server (Node) Software Events

Sub-system	Event Description	FRU-ID/Code	Event-ID/Code	Alert (High, Middle, Low)	State (Failed, Degraded, Warning, Info, Good)
Configuration	Configuration not recommended		SL_EVT_CFG_NOT_REC/40	Low	Warning
	Configuration not supported		SL_EVT_BADCFG_NOT_SUP/41	Low	Warning
	Bad EVPS configuration		SL_EVT_BADCFG_EVPS/42	Low	Warning
	Configuration not recommended		SL_EVT_CFG_NOT_REC/40	Low	Warning
Database	Database corruption		SL_EVT_DB_CORRUPT/61	High	Failed
Filesystem	File not found		SL_EVT_FILE_NOT_PRESENT/69	Low	Warning
	File system not found		SL_EVT_FILESYS_NOT_PRESENT/70	High	Failed
	Filesystem metadata dump bad		SL_EVT_FS_META_BAD/73	High	Failed
Keep Alive	Cluster task failed	SL_FRU_CLUSTER/0115	SL_EVT_FAILOVER_ERROR/79	High	Failed
	Application task failed	SL_FRU_CLUSTER/0115	SL_EVT_TASK_DIED/1	High	Failed

Sub-system	Event Description	FRU-ID/Code	Event-ID/Code	Alert (High, Middle, Low)	State (Failed, Degraded, Warning, Info, Good)
Maintenance	Maintenance operation has failed		SL_EVT_MAINT_FAIL/56	High	Failed
Media	Media has expired		SL_EVT_MEDIA_EXPIRED/57	Low	Warning
	Tape alert		SL_EVT_TAPE_ALERT/58	Low	Warning
	Duplicate barcode		SL_EVT_MEDIA_DUPLICATE/63	Low	Warning
	Unknown media		SL_EVT_MEDIA_UNKNOWN/64	Low	Warning
	No media found to satisfy the request.		SL_EVT_NO_MEDIA/75	Low	Warning
Mode	System taken offline		SL_EVT_TAKEN_OFFLINE/71	Low	Warning
Operation	Operation failure		SL_EVT_OP_FAIL/51	High	Failed
Performance	Performance degraded		SL_EVT_PERF_DEGRADED/50	Low	Warning
Reporting	Error reported		SL_EVT_REPORT_ERR/53	Low	Warning
	Warning reported		SL_EVT_REPORT_WARN/66	Low	Warning
Response	Not responding		SL_EVT_NO_RESPONSE/52	Low	Warning
	Not supported		SL_EVT_NOT_SUP/67	Low	Warning

Sub-system	Event Description	FRU-ID/Code	Event-ID/Code	Alert (High, Middle, Low)	State (Failed, Degraded, Warning, Info, Good)
Resource	System resource warning		SL_EVT_SYS_RES_WARN/65	Low	Warning
Vaulting	Vaulting operation failed		SL_EVT_VAULT_FAIL/74	High	Failed
Virtual Volume	Virtual volume error		SL_EVT_VIRT_VOL_ERR/49	Low	Warning

Table 4 RAID Array Events
(DXi7500 Only)

Sub-system	Event Description	FRU ID/Code	Event/Code	Alert (High, Middle, Low)	State (Failed, Degraded, Warning, Info, Good)
Alarm	RAID alarm	SL_FRU_RAID_ALARM/0312			
Battery	Battery failure	SL_FRU_RAID_BATTERY/030F		High	Failed
Chassis	Hardware fault	SL_FRU_RAID_CHASSIS/0303	SL_EVT_HW_FAULT/7	High	Failed
Drives		SL_FRU_RAID_DRV/0302			

Sub-system	Event Description	FRU ID/Code	Event/Code	Alert (High, Middle, Low)	State (Failed, Degraded, Warning, Info, Good)
Fan	Fan failure	SL_FRU_RAID_FAN/0305	SL_EVT_FAN_FAIL/19	High	Failed
	Not present	SL_FRU_RAID_FAN/0305	SL_EVT_NOT_PRESENT/9	High	Failed

Sub-system	Event Description	FRU ID/Code	Event/Code	Alert (High, Middle, Low)	State (Failed, Degraded, Warning, Info, Good)
General	Invalid RAID type (non-ADIC)	SL_FRU_RAID_SENSOR/030C	SL_EVT_RAID_INVALID/21	High	Failed
	Hardware fault	SL_FRU_RAID_SENSOR	SL_EVT_HW_FAULT/7	High	Failed
	Communication failure	SL_FRU_RAID_SENSOR	SL_EVT_COMM_FAIL/25	High	Failed
	Wrong firmware level	SL_FRU_RAID_SENSOR	SL_EVT_WRONG_FW_LEVEL/30	High	Failed
	LUN communication failure	SL_FRU_RAID_SENSOR	SL_EVT_COMM_LUN_FAIL/48	High	Failed
	Drive failure	SL_FRU_RAID_SENSOR	SL_EVT_DRV_FAIL/22	High	Failed
	Drive removed	SL_FRU_RAID_SENSOR	SL_EVT_DRV_REMOVED/23	High	Failed
	Global spare not detected	SL_FRU_RAID_SENSOR	SL_EVT_NO_GLOBAL_SPARE/45	High	Degraded
	Drive rebuild failure	SL_FRU_RAID_SENSOR	SL_EVT_DRV_REBUILD_FAIL	High	Failed
	Logical drive failure (data loss)	SL_FRU_RAID_SENSOR	SL_EVT_LOGDRV_FAILURE/47	High	Failed
Power fan canister	Power supply fan failure	SL_FRU_RAID_CRU/0313			

Sub-system	Event Description	FRU ID/Code	Event/Code	Alert (High, Middle, Low)	State (Failed, Degraded, Warning, Info, Good)
Power supply	Power supply failure	SL_FRU_RAID_PWR/0304	SL_EVT_PWR_FAIL/17	High	Failed
	Not present	SL_FRU_RAID_PWR/0304	SL_EVT_NOT_PRESENT/9	High	Failed
Sensors	Under temperature	SL_FRU_RAID_SENSOR/030C	SL_EVT_UNDERTEMP/35	Low	Warn
	Over temperature	SL_FRU_RAID_SENSOR/030C	SL_EVT_OVERTEMP/36	Low	Warn
SFP	SFP failure	SL_FRU_RAID_SFP/030E		Low	Warn
Volume	RAID volume has failed	SL_FRU_RAID_VOL/030B	SL_EVT_FAILED/120	High	High
	RAID volume is degraded	SL_FRU_RAID_VOL/030B	SL_EVT_DEGRADED/115	High	Degraded
	RAID volume is impaired	SL_FRU_RAID_VOL/030B	SL_EVT_IMPAIRED/121	High	Warning

Table 5 Ethernet Switch Events
(DXi7500 Only)

Sub-system	Event Description	FRU-ID/Code	Event-ID/Code	Alert (High, Middle, Low)	State (Failed, Degraded, Warning, Info, Good)
Fan	Ethernet switch fan speed low	SL_FRU_NWS_FAN/0809	SL_EVT_FAN_LOW_SPEED/18	Middle	Warning
	Ethernet switch fan speed high	SL_FRU_NWS_FAN/0809	SL_EVT_FAN_HIGH_SPEED/97	High	Failed
	Ethernet switch fan fail	SL_FRU_NWS_FAN/0809	SL_EVT_FAN_FAIL/19	High	Failed
	Ethernet switch fan not present.	SL_FRU_NWS_FAN/0809	SL_EVT_NOT_PRESENT/9	High	Failed

Sub-system	Event Description	FRU-ID/Code	Event-ID/Code	Alert (High, Middle, Low)	State (Failed, Degraded, Warning, Info, Good)
General	Switch is unavailable	SL_FRU_NW_SWITCH	SL_EVT_COMM_FAIL/25	High	Failed
	Invalid configuration (connection, VLANs)	SL_FRU_NW_SWITCH	SL_EVT_CONFIG_FAIL/102	High	Failed
	Wrong firmware level	SL_FRU_NW_SWITCH	SL_EVT_WRONG_FW_LEVEL/30	High	Failed
	Authentication problems	SL_FRU_NW_SWITCH	SL_EVT_AUTH_FAILURE/103	High	Failed
	EGP is broken	SL_FRU_NW_SWITCH	SL_EVT_EGP_FAIL/104	High	Failed
	Link down	SL_FRU_NW_SWITCH	SL_EVT_LINK_FAIL/14	High	Failed
	MAC address variation in table	SL_FRU_NW_SWITCH	SL_EVT_MAC_CHANGED/105	High	Failed
	Port type changed	SL_FRU_NW_SWITCH	SL_EVT_PORT_FAIL/15	High	Failed
	Cold/warm start	SL_FRU_NW_SWITCH	SL_EVT_REBOOT/106	Middle	Warning
	Ethernet communication failure		SL_EVT_COMM_ETH_FAIL	High	Failed
	Ethernet switch not present	SL_FRU_NWS/0803	SL_EVT_NOT_PRESENT/9	High	Failed
	Ethernet switch invalid	SL_FRU_NWS/0803	SL_EVT_SWITCH_INVALID/20	High	Failed
Ethernet switch hardware fault	SL_FRU_NWS/0803	SL_EVT_HW_FAULT/7	High	Failed	

Sub-system	Event Description	FRU-ID/Code	Event-ID/Code	Alert (High, Middle, Low)	State (Failed, Degraded, Warning, Info, Good)
Power Supply	Ethernet switch power supply undervolt.	SL_FRU_NWS_PWR/0810	SL_EVT_UNDERVOLTAGE/11	Middle	Warning
	Ethernet switch power supply overvolt	SL_FRU_NWS_PWR/0810	SL_EVT_OVERVOLTAGE/10	High	Failed
	Ethernet switch power supply fail	SL_FRU_NWS_PWR/0810	SL_EVT_PWR_FAIL/17	High	Failed
	Ethernet switch power supply not present.	SL_FRU_NWS_PWR/0810	SL_EVT_NOT_PRESENT/9	High	Failed
Temperature	Ethernet switch not present	FRU_NWS_TEMP/0808	SL_EVT_NOT_PRESENT/9	High	Failed
	Ethernet switch under temperature	FRU_NWS_TEMP/0808	SL_EVT_UNDERTEMP/35	Middle	Warning
	Ethernet switch over temperature	FRU_NWS_TEMP/0808	SL_EVT_OVERTEMP/36	High	Failed
	Ethernet switch hardware fault	FRU_NWS_TEMP/0808	SL_EVT_HW_FAULT/7	High	Failed

Table 6 Network Interface Card Events

Sub-system	Event Description	FRU-ID/Code	Event-ID	Alert (High, Middle, Low)	State (Failed, Degraded, Warning, Info, Good)
Ethernet port	Ethernet port not present	SL_FRU_NIC_ETHER_PORT/0116	SL_EVT_NOT_PRESENT/9	High	Failed

Table 7 Fibre Channel Switch Events (DXi7500 Only)

Sub-system	Event Description	FRU-ID/Code	Event-ID/Code	Alert (High, Middle, Low)	State (Failed, Degraded, Warning, Info, Good)
Chassis	Removed	SL_FRU_FCS/0201	SL_EVT_NOT_PRESENT/9	High	Failed
	Invalid	SL_FRU_FCS/0201	SL_EVT_HW_FAULT/7	High	Failed
Communication	FC communication failure		SL_EVT_COMM_FC_FAIL/28		Failed
Control Processor (CP)	Removed	SL_FRU_FCS_CP/0205	SL_EVT_NOT_PRESENT/9	High	Failed
	Invalid	SL_FRU_FCS_CP/0205	SL_EVT_HW_FAULT/7	High	Failed

Sub-system	Event Description	FRU-ID/Code	Event-ID/Code	Alert (High, Middle, Low)	State (Failed, Degraded, Warning, Info, Good)
Fan	Absent	SL_FRU_FCS_FAN/0203	SL_EVT_NOT_PRESENT/9	High	Failed
	Below minimal	SL_FRU_FCS_FAN/0203	SL_EVT_FAN_LOW_SPEED/18	Middle	Warning
	Above maximum	SL_FRU_FCS_FAN/0203	SL_EVT_FAN_HIGH_SPEED/97	High	Failed
	Failed	SL_FRU_FCS_FAN/0203	SL_EVT_FAN_FAIL/19	High	Failed
General	Cold/warm start	SL_FRU_FCS/0201	SL_EVT_REBOOT/106	Middle	Warning
	Licence required	SL_FRU_FCS/0201	SL_EVT_LICENSE_FAIL/72	High	Failed
	Switch is unavailable (FC link broken)	SL_FRU_FCS/0201	SL_EVT_LINK_FAIL/14	High	Failed
	Switch management is broken	SL_FRU_FCS/0201	SL_EVT_COMM_FAIL/25	High	Failed
	Invalid configuration (connection, zones)	SL_FRU_FCS/0201	SL_EVT_BADCFG_FC_PORT/43	High	Failed
	Wrong firmware level	SL_FRU_FCS/0201	SL_EVT_WRONG_FW_LEVEL/30	High	Failed
	SFP is down	SL_FRU_FCS/0201	SL_EVT_NOT_PRESENT/9	High	Failed

Sub-system	Event Description	FRU-ID/Code	Event-ID/Code	Alert (High, Middle, Low)	State (Failed, Degraded, Warning, Info, Good)
Power Supply	Absent	SL_FRU_FCS_PWR/0202	SL_EVT_NOT_PRESENT/9	High	Failed
	Below minimal	SL_FRU_FCS_PWR/0202	SL_EVT_UNDERVOLTAGE/11	Middle	Warning
	Above maximum	SL_FRU_FCS_PWR/0202	SL_EVT_OVERVOLTAGE/10	High	Failed
	Failed	SL_FRU_FCS_PWR/0202	SL_EVT_PWR_FAIL/17	High	Failed
SFP		SL_FRU_FCS_SFP/0204			
Switchnode	Removed	SL_FRU_FCS_SB/0206	SL_EVT_NOT_PRESENT/9	High	Failed
	Invalid	SL_FRU_FCS_SB/0206	SL_EVT_HW_FAULT/7	High	Failed
Temperature Sensor	Absent	SL_FRU_FCS_TEMP/0208	SL_EVT_NOT_PRESENT/9	High	Failed
	Below minimal	SL_FRU_FCS_TEMP/0208	SL_EVT_UNDERTEMP/35	Middle	Warning
	Above maximum	SL_FRU_FCS_TEMP/0208	SL_EVT_OVERTEMP/36	High	Degraded
	Failed	SL_FRU_FCS_TEMP/0208	SL_EVT_HW_FAULT/7	High	Failed
WWN	Removed	SL_FRU_FCS_WWN/0207	SL_EVT_NOT_PRESENT/9	High	Failed
	Invalid	SL_FRU_FCS_WWN/0207	SL_EVT_HW_FAULT/7	High	Failed

Table 8 Fibre Channel HBA
Events

Sub-system	Event Description	FRU-ID/Code	Event-ID/Code	Alert (High, Middle, Low)	State (Failed, Degraded, Warning, Info, Good)
Device mapper connection	Multi-path is broken	SL_FRU_IOS_FC_HBA/0118		High	Failed
Device connection	Path is broken	SL_FRU_IOS_FC_HBA/0118	SL_EVT_LINK_FAIL/14	High	Failed
Hotplug	Absent	SL_FRU_IOS_FC_HBA/0118	SL_EVT_NOT_PRESENT/9	High	Failed
	Failed	SL_FRU_IOS_FC_HBA/0118	SL_EVT_HW_FAULT/7	High	Failed
	SCSI device unavailable	SL_FRU_IOS_FC_HBA_DEVICE/0118	SL_EVT_NOT_PRESENT/9	High	Failed

Table 9 Compression HBA
Events (DXi7500 Only)

Sub-system	Event Description	FRU-ID/Code	Event-ID/Code	Alert (High, Middle, Low)	State (Failed, Degraded, Warning, Info, Good)
HiFn	Device is broken (unavailable)	SL_FRU_COMPRESS/0117	SL_EVT_NOT_PRESENT/9	High	Failed
	Compressed errors	SL_FRU_COMPRESS/0117	SL_EVT_SW_FAULT/8	High	Failed
	Hardware errors	SL_FRU_COMPRESS/0117	SL_EVT_HW_FAULT/7	High	Failed

Table 10 Software Events

Sub-system	Event Description	FRU-ID/Code	Event-ID/Code	Alert (High, Middle, Low)	State (Failed, Degraded, Warning, Info, Good)
NDMP	License is required	SL_FRU_DXI_SOFTWARE/0804	SL_EVT_LICENSE_REQUIRED/80	High	Failed
	License failed	SL_FRU_DXI_SOFTWARE/0804	SL_EVT_LICENSE_FAIL/72	High	Failed
NAS	Operation failure	SL_FRU_NAS_SERVICES/0119	SL_EVT_OP_FAIL/51	High	Failed
	Delayed	SL_FRU_NAS_SERVICES/0119	SL_EVT_DELAYED/131	High	Informational

Sub-system	Event Description	FRU-ID/Code	Event-ID/Code	Alert (High, Middle, Low)	State (Failed, Degraded, Warning, Info, Good)
SNFS	LUN communication failure	SL_FRU_SNFS/010D	SL_EVT_COMM_LUN_FAIL/48	High	Failed
	Filesystem not found	SL_FRU_SNFS/010D	SL_EVT_FILESYS_NOT_PRESENT/70	High	Failed
	Fail-over has occurred	SL_FRU_SNFS/010D	SL_EVT_FAIL_OVER/87	Middle	Informational
	Label validation failure	SL_FRU_SNFS/010D	SL_EVT_INVALID_LABEL/82	High	Degraded
	System resource failure	SL_FRU_SNFS/010D	SL_EVT_SYS_RES_FAIL/2	High	Warning
	Communication failure	SL_FRU_SNFS/010D	SL_EVT_COMM_FAIL/25	Middle	Warning
	LUN mapping changed	SL_FRU_SNFS/010D	SL_EVT_LUN_CHANGE/88	Low	Warning
	IO Error	SL_FRU_SNFS/010D	SL_EVT_IO_ERR/24	High	Warning
	Configuration not supported	SL_FRU_SNFS/010D	SL_EVT_BADCFG_NOT_SUP/41	High	Failed
	Failed to allocate disk space	SL_FRU_SNFS/010D	SL_EVT_DISK_ALLOC_FAIL/89	High	Failed
	Metadata error	SL_FRU_SNFS/010D	SL_EVT_META_ERR/90	High	Warning
	Journaling error	SL_FRU_SNFS/010D	SL_EVT_JOURNAL_ERR/91	High	Failed
	Error shutting down	SL_FRU_SNFS/010D	SL_EVT_SHUTDOWN_ERR/92	Middle	Warning
	Filesystem metadata dump bad	SL_FRU_SNFS/010D	SL_EVT_FS_META_BAD/73	High	Warning

Sub-system	Event Description	FRU-ID/Code	Event-ID/Code	Alert (High, Middle, Low)	State (Failed, Degraded, Warning, Info, Good)
Software	Metadump failed	SL_FRU_BLOCKPOOL/0802	SL_EVT_OP_FAIL/51	High	Failed
	Namespace replication failed	SL_FRU_BLOCKPOOL/0802	SL_EVT_REPL_FAIL/108	High	Failed
	Replication paused by system	SL_FRU_BLOCKPOOL/0802	SL_EVT_REPL_PAUSE/109	High	Failed
	Replication qbfs failure	SL_FRU_BLOCKPOOL/0802	SL_EVT_REPL_QBFS_FAIL/110	High	Failed
	Emergency truncation activated		SL_EVT_EMERG_TRUNCATION/68	Middle	Warning
	Process/Task died (not restarted)	SL_FRU_SNFS/010D	SL_EVT_TASK_DIED/1	High	Failed
	Performance degraded	SL_FRU_SNFS/010D	SL_EVT_PERF_DEGRADED/50	High	Degraded
	SL_EVT_NO_RESPONSE	SL_FRU_SNFS/010D	Not responding	High	Failed
Space Management	Ingest Throttled to slow IO	SL_FRU_SPACE_MGR/0807	SL_EVT_THROTTLE/112	Middle	Warning
	Stop IO due to no space	SL_FRU_SPACE_MGR/0807	SL_EVT_NOSPACE/113	High	Failed